



Sign in | Register for free

Site Search Search Local Business Listings

Sponsored By:



Sign in with Facebook

Search for keywords, people, locations, obituaries, Web ID and more...

Go

- Home
- News
- Weather
- Sports
- Entertainment
- Living
- Interact
- Jobs
- Autos
- Real Estate
- Rentals
- Classifieds
- Find n Save

- Top Stories
- Op-Ed: 'Let's vote on traffic cams'
- 2012 NCAA Bracket Challenge
- Today's Top Stories

Home > St. Tammany Community News > Arts

# 'Hyperreality' to be exhibited through March 30 at Slidell Cultural Center

Published: Sunday, March 18, 2012, 7:00 AM



By Kathleen DesHotel  
Follow

Sponsored By:



Recommend 14 people recommend this. Be the first of your friends.

Comment 0

Tweet 7

2

Share

Email

Print

Having known Amy Tubbs Guidry since she was a senior in my high school Advanced Placement English class and watching her organize her work successfully in a notebook filled with amazing doodles makes this exhibit and her journey all the more impactful. Looking at her work elicits not only tremendous respect for her technical and artistic talent but also the incredible amount of business persistence she utilizes.



Kathleen DesHotel

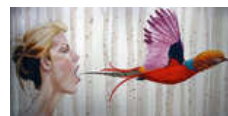
At the opening of her exhibit, Amy Tubbs Guidry, a Lafayette artist originally from Slidell, returned to her roots to share specific pieces of her acclaimed works at the Slidell Cultural Center.

"It does take a lot of time. Lately, I spend half my day painting and half working on marketing materials and so forth. There's actually a great deal of paperwork involved anytime an artist shows with a gallery or when signing on with them on a more permanent basis. Then, of course, there's more paperwork for sales and shipping too," she explained.

Of the exhibit currently at the Slidell Cultural Center at City Hall, the most appropriate word to describe the impact of the Lafayette-based artist's work is "intense." An interest in art and psychology surfaces in all of her works. We do not see just a lovely flower or a cute animal or a pretty face; rather, we see commentaries on human condition, including an observance of our ironic behaviors and the contradictions of

our habits.

She uses herself as a vehicle to present a process of continuing enlightenment. Like a surreal, modern fairy princess painted with exquisite, life-like brush strokes presented in exaggerated situations to chart the course of her own life and perhaps all of our lives. Laurie Manley, Slidell Memorial Hospital Volunteer Coordinator, remarked, "This is one of the most moving shows I have ever seen. The paintings in the New Realm and Beneath the Surface series are not only beautiful, but they



Kathleen DesHotel

Now showing at the Slidell Cultural Center in Olde Towne, Amy Guidry shares her New

## More St. Tammany Community News

Most Comments Most Recent

St. Tammany Community News stories with the most comments in the last 7 days.

- 2 Tammany public schools LEAP testing begins March 20
- 2 Beloved Olde Towne Slidell ice cream parlor to reopen
- 2 Olde Towne Slidell St. Patrick's Parade is March 18
- 1 Poker Run for Autism rolls March 23-24

...speak to something deep within my heart and soul. Amy Guidry has successfully translated my inner feelings, thoughts, fears and dreams onto canvas. I hope that everyone in Slidell, especially women, see this show."

Realm Series, which focuses on modern women as they take flight in modern times as shown in 'Freedom.'

1 Great Louisiana BirdFest offers bounty of birding in St. Tammany

Guidry explains that as a child, she drew and painted because it provided great enjoyment, and she still finds that same pleasure and reward. She elaborates, "It has become a vehicle for sharing ideas, asking questions and promoting positive change. If I can capture the attention of a viewer with my work, then I have the opportunity to speak to them through my painting. From there, maybe it will inspire a discussion. My paintings provide a chance to connect with another human being and hopefully have a positive effect from that moment on."

This solo exhibit features paintings from several of her various series, including portraits and social commentaries. She describes her work as a grand marriage of art and psychology in surrealism. "I was naturally drawn to every aspect behind the movement. Themes I explore involve the human psyche: who we are, how we interact, what is our relationship with other animals and the natural world."



Kathleen DesHotel

'Girl on Campus' is part of a series of portraits that delve into the story of a person behind the surface and expressed in the eyes and expression.

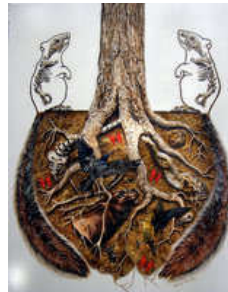
In the New Realm series "Freedom," a self-portrait explains its title in an image of the artist opening her mouth to release a beautifully colorful pheasant flying forward. The bird presents an emotional statement of woman's emergence with strength and independence. It is a technical triumph in the beautiful skin tones and hair strands, and it creates a successful animation of elements that moves the eye across the expanse of the canvas from the human to the brilliantly colored bird. The work is skillfully thought out, in that it places the subjects, not in a human environment, but in a natural environment with a subtle backdrop of tree barks.

Portraits in her Beneath the Surface series frame tightly on faces that express stories of life experiences. In the publication "American Artist," Guidry describes her process as first noticing faces that resonate with her. "I don't make a

preliminary sketch, because I always have the image worked out in my head. I paint a rough first draft and then lay in the details, with the eyes first because they reveal so much."

This series concentrates on inner person images, as in "Girl on Campus," as well as irony of social and personal attitudes and expectations. For instance, "Anti-Aging" depicts a mature woman standing before well-stocked cosmetic creams with labels: cell regeneration, wrinkle release, anti-droop facelift, collagen filler, anti fatigue/sag and wrinkle cream. The face includes aspects of maturity that most women wish to Photoshop out of images of themselves. It generates thoughts of whether we value or mask experience.

"Symbiotic" uses a biological term to enhance the interpretation of an image that expresses the relationship between entities that need each other to survive and prosper. In it, a tree centers the image with birds, insects and animals in its roots and the outline of mirrored mice with exact skeletal structure exposed within. With respect for the environment as well as the people and animals in it, Guidry spends her painting hours with her no-longer-stray cat, Baby, at her feet. These paintings originated in dreams and deep thoughts regarding life cycles. The four images exhibited in this series provoke introspection about where and how we all fit in.



Kathleen DesHotel

'Symbiotic' focuses upon relationships between entities that need each other to survive.

Her work has been exhibited in galleries and museums nationwide, featured on MTV, and has been published in several scholarly and artistic publications. Anyone who has an interest in profound art, especially artists — budding or experienced — should experience Amy Guidry's "Hyperreality" exhibit. The magic, intensity, technique, message and talent of her expressions are guaranteed to captivate any viewer.

The works will be showing at the Slidell Cultural Center, 2055 Second St. in Olde Towne until March 30, weekdays from noon to 4 p.m. and on Saturday from 9 a.m. until noon. To contact or to view more works by the artist, visit www.amyguidry.com.

News about arts activities in east St. Tammany may be sent to Kathleen DesHotel, 1120 Pennsylvania Ave., Slidell, LA 70458-2008; or by email to kathleenfocused@gmail.com. All submissions become the property of The Times-Picayune and will not be returned; submissions may be edited and published or otherwise reused in any medium.

Most Active Users

What's this?

Connect with NOLA.com

What's this?

All Facebook & Twitter accounts »

Recommendations



KISS, the Black Keys, Jimmy Buffett to play free concerts in New Orleans during Final Four

Cara Rost, Kerry Griechen and 1,511 others recommend this.

Florence Brigham, former owner of The Club Ms. Mae's, has died
1,059 people recommend this.



Eight New Orleans chefs and restaurants nominated for James Beard Awards
Cara Rost and 490 others recommend this.

Facebook social plugin

From Our Advertisers

Advertise With Us »

New Orleans ULTIMATE INSIDER'S GUIDE IPAD APP
DINING • MUSIC • THINGS TO SEE
Download Now!

Popular Tags

What's this?

- abita springs abita springs
community news covington
community news folsom community news
lacombe community news
mandeville community news pearl
river community news slidell
community news st tammany

Related topics: [slidell community news](#), [st. tammany charity events](#), [st. tammany volunteers](#)

Inappropriate post? [Alert us.](#)

[community news](#) [st. tammany adult leagues](#) [st. tammany arts and entertainment](#) [st. tammany beautification programs](#) [st. tammany business news](#) [st. tammany charity events](#) [st. tammany community church news](#) [st. tammany community events](#) [st. tammany community news](#) [st. tammany elementary schools](#) [st. tammany gardens](#) [st. tammany health news](#) [st. tammany high schools](#) [st. tammany junior high schools](#) [st. tammany volunteers](#) [st. tammany youth leagues](#)

### Sponsored Links

#### SNPK is Exploding

Sunpeaks Ventures is The Hottest Stock on The Market. Buy it Early!  
[www.smallcapfortunes.com/snpk/](http://www.smallcapfortunes.com/snpk/)

#### Become a Travel Agent

Study at home. Travel Agency Proficiency exam voucher included.  
[www.PennFoster.edu](http://www.PennFoster.edu)

#### OLOL College

Private accredited 4 year college, Financial Aid Available  
[www.ololcollege-edu.org](http://www.ololcollege-edu.org)

#### Colorado Ranch Vacation

Colorado's Premier 4 Diamond Ranch Vacation  
[www.lostvalleyranch.com](http://www.lostvalleyranch.com)

Share this story

Story tools

[Email](#)

[Print](#)

### More stories in St. Tammany Community News

Previous story

[Faith-related notes for west St. Tammany](#)

Next story

[Covington High honors students of the month for March](#)

0

## Comments

[Feed](#)

[Post a comment](#)

### Post a comment

Sign in to NOLA.com

Username

Password

Remember me?

[Sign In](#)

[I forgot my username or password »](#)

Don't have an account?

[Register now for free](#), or sign in with any of these services:

[Sign in with Facebook](#)

[AIM](#)

[Google](#)

[OpenID](#)



Site Search

Search Local Business Listings

[Go](#)

[Site Map](#) | [Advertise](#) | [Contact us](#)

[Make us your home page](#)

[Home](#) | [News](#) | [Weather](#) | [Sports](#) | [Entertainment](#) | [Interact](#) | [Living](#) | [Jobs](#) | [Autos](#) | [Real Estate](#) | [Classifieds](#) | [Shopping](#) | [Place an Ad](#)

- [Your Photos](#)
- [Your Videos](#)
- [Blogs](#)
- [Forums](#)
- [Travel](#)
- [Music](#)

- [Post a Job](#)
- [Post a free classified ad](#)
- [Sell your car](#)
- [Sell/Rent your Home](#)
- [Apartments & Rentals](#)
- [Claim your Business Listing for Free](#)

- [Business News](#)
- [US & World News](#)
- [Obits / Death Notices](#)
- [Live Webcams](#)
- [Pets](#)

- [Subscribe to our content \(RSS\)](#)
- [News alerts](#)
- [NOLA.com Twitter feed](#)
- [NOLA.com mobile site](#)
- [View mobile product offerings](#)



Subscribe to **The Times-Picayune** today and get incredible savings off home delivery! [Subscribe Now!](#)

Registration on or use of this site constitutes acceptance of our [User Agreement](#) and [Privacy Policy](#) (Revised November 1, 2011)

© 2012 New Orleans Net LLC. All rights reserved ([About Us](#)).

The material on this site may not be reproduced, distributed, transmitted, cached or otherwise used, except with the prior written permission of New Orleans Net LLC.

[Community Rules](#) apply to all content you upload or otherwise submit to this site. [Contact interactivity management.](#)

[Ad Choices](#)